



# GAT MONTHLY MEMBERSHIP PROGRESS REPORT

Results as of: 3/31/2023

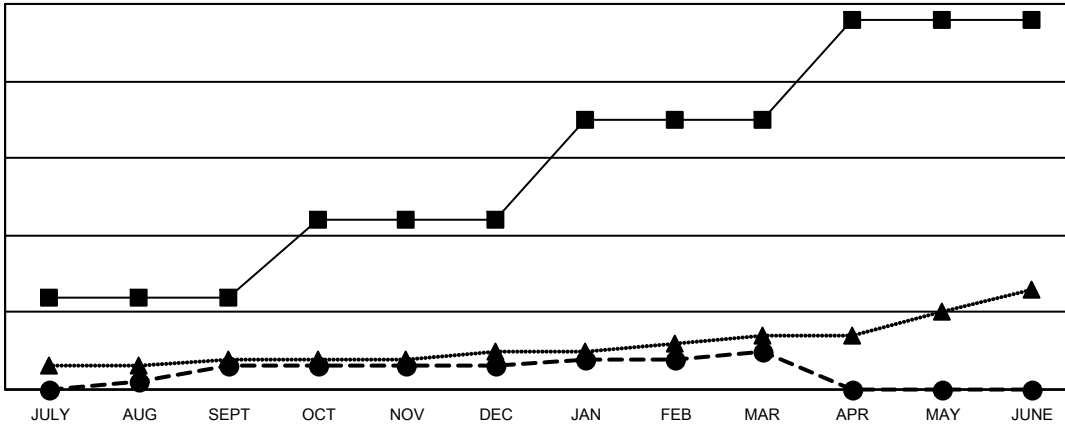
Multiple District 4

LOCATION: CALIFORNIA

Clubs			
RESULTS FOR 2022-2023			
QUARTER	NEW CLUB GOAL	NEW CLUBS	DROPPED CLUBS
JULY/AUG/SEPT	12	3	3
OCT/NOV/DEC	10	0	14
JAN/FEB/MAR	13	2	3
APR/MAY/JUNE	13	0	0

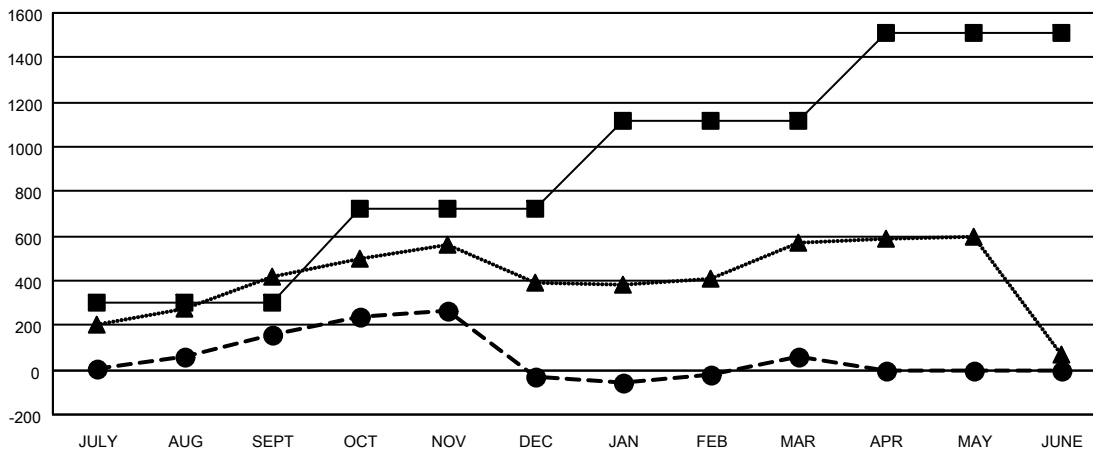
Members			
RESULTS FOR 2022-2023			
QUARTER	MEMBER GROWTH NET GOAL	MEMBER GROWTH ACTUAL	DROPPED MEMBERS ACTUAL (including transfers)
JULY/AUG/SEPT	300	826	600
OCT/NOV/DEC	422	590	716
JAN/FEB/MAR	395	745	518
APR/MAY/JUNE	391	0	0

GOALS AND ACTUAL NEW CLUBS CUMULATIVE



- - CURRENT YEAR GOALS FOR NEW CLUBS
- - CURRENT YEAR ACTUAL NEW CLUBS
- ▲ - LAST YEAR ACTUAL NEW CLUBS

GOALS AND ACTUAL MEMBERS CUMULATIVE



- - MEMBER GROWTH NET GOAL
- - MEMBER GROWTH ACTUAL
- ▲ - LAST YEAR MEMBERSHIP ACTUAL

DROPPED CLUBS: 20	
<b>DROPPED MEMBERS</b>	
DECEASED	176
CLUB CANCELLED	151
OTHER	1,509
<b>TOTAL</b>	<b>1,836</b>

415 CLUBS OF 690 ADDED 1 OR MORE NEW MEMBERS

[CLICK HERE FOR CUMULATIVE MEMBERSHIP DATA](#)

GENDER DISTRIBUTION	
MALE	10,635 (57.84%)
FEMALE	7,737 (42.08%)
NON BINARY	1 (0.01%)
PREFER NOT TO ANSWER	13 (0.07%)
<b>TOTAL FAMILY UNIT MEMBERS</b>	<b>3,447</b>
<b>FAMILY MEMBERS PAYING HALF DUES</b>	<b>1,830</b>